



FOR GENERAL PURPOSE GROUND VEHICLES

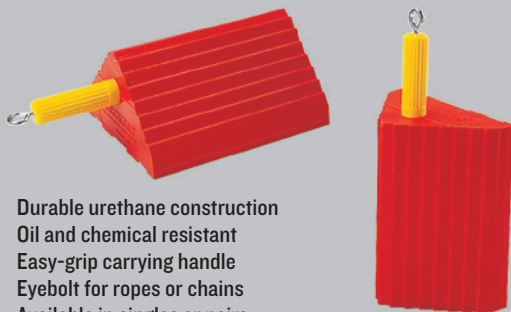
For tire diameters 27" to 48" (68.6 cm to 116.8 cm)

FEATURES

- Highly durable, lightweight construction
- For wheels with up to a 48" outside dia.
- Weather-resistant polyurethane construction
- Resistant to oils, fuels, and solvents
- UC chocks have been 3rd party tested, certified, and trusted by fleets globally

MONSTER® GENERAL PURPOSE UC SERIES WHEEL CHOCKS are manufactured with highly durable, lightweight polyurethane construction. These chocks are ideal for use with over-the-road trucks, trailers, pickups and utility vehicles.

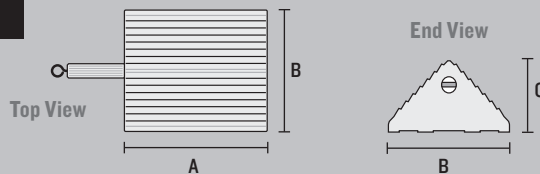
GENERAL PURPOSE - UC1400 SERIES



- Durable urethane construction
- Oil and chemical resistant
- Easy-grip carrying handle
- Eyebolt for ropes or chains
- Available in singles or pairs

UC1400-4.5 is certified for tire diameter 27" to 32" (68.6 cm to 81.3 cm) and gross vehicle operating weight up to 30,000 lb. (13,608 kg).

UC1400-6 is certified for tire diameter 27" to 32" (68.6 cm to 81.3 cm) and gross vehicle operating weight up to 60,000 lb. (27,216 kg).



MODEL	A: LENGTH	B: WIDTH	C: HEIGHT	WEIGHT	COLOR
UC1400-4.5	10 in. (25.4 cm)	8.5 in. (21.6 cm)	5 in. (12.7 cm)	4.5 lb. (2 kg)	Orange
UC1400-4.5-P (PAIR OF CHOCKS*)	10 in. (25.4 cm)	8.5 in. (21.6 cm)	5 in. (12.7 cm)	9.5 lb. (4.3 kg) (PAIR OF CHOCKS)	Orange
UC1400-6	10 in. (25.4 cm)	8.5 in. (21.6 cm)	5 in. (12.7 cm)	6 lb. (2.7 kg)	Orange
UC1400-6-P (PAIR OF CHOCKS*)	10 in. (25.4 cm)	8.5 in. (21.6 cm)	5 in. (12.7 cm)	12.5 lb. (5.7 kg) (PAIR OF CHOCKS)	Orange

* Pairs attached with a 48" long piece of 5/8" Polyester rope.

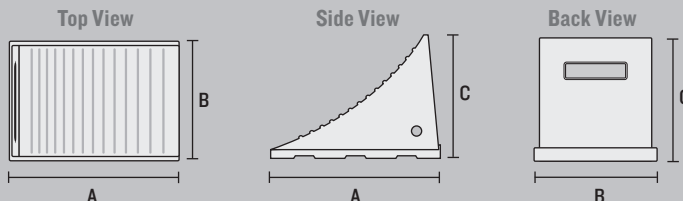
GENERAL PURPOSE - UC 1500 SERIES



- Durable urethane construction
- Oil and chemical resistant
- Recessed carrying handle
- Mounting hole for ropes or chains
- Mounting brackets available
- High visibility orange color
- Available in singles or pairs

UC1500-4.5 is certified for tire diameter 32" to 46" (81.3 cm to 116.8 cm) and gross vehicle operating weight up to 50,000 lb. (22,680 kg).

UC1500-6 is certified for tire diameter 32" to 46" (81.3 cm to 116.8 cm) and gross vehicle operating weight up to 70,000 lb. (31,751 kg).



MODEL	A: LENGTH	B: WIDTH	C: HEIGHT	WEIGHT	COLOR
UC1500-4.5	11.5 in. (29.2 cm)	9 in. (22.9 cm)	8.5 in. (21.6 cm)	4.5 lb. (2 kg)	Orange
UC1500-4.5-P (PAIR OF CHOCKS*)	11.5 in. (29.2 cm)	9 in. (22.9 cm)	8.5 in. (21.6 cm)	9.5 lb. (4.3 kg) (PAIR OF CHOCKS)	Orange
UC1500-6	11.5 in. (29.2 cm)	9 in. (22.9 cm)	8.5 in. (21.6 cm)	6 lb. (2.7 kg)	Orange
UC1500-6-P (PAIR OF CHOCKS*)	11.5 in. (29.2 cm)	9 in. (22.9 cm)	8.5 in. (21.6 cm)	12.5 lb. (5.7 kg) (PAIR OF CHOCKS)	Orange

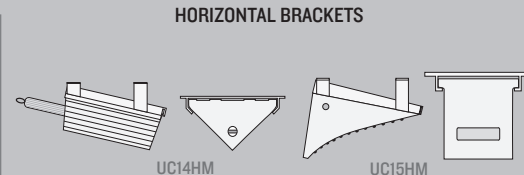
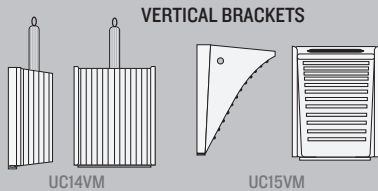
* Pairs attached with a 48" long piece of 5/8" Polyester rope.

MOUNTING BRACKET FOR UC 1400 AND UC1500 SERIES

*(Mounting Hardware NOT Included)

VERTICAL BRACKET

HORIZONTAL BRACKET

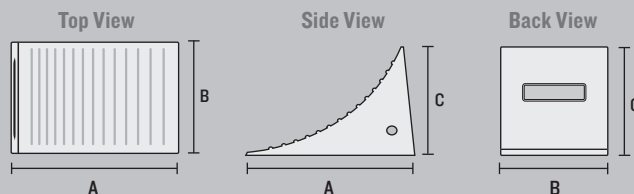


MODEL	DESCRIPTION	WEIGHT
UC15VM	Vertical Mounting Bracket* for 1500 Series Wheel Chock. Zinc Plated. 12.88" x 11.75" x 1.5"	2.5 lb. (1.1 kg)
UC15HM	Horizontal Underbody Mounting Bracket* for 1500 Series Wheel Chock. Zinc Plated. 12" x 11.5" x 4.25"	2.75 lb. (1.2 kg)
UC14VM	Vertical Mounting Bracket* for 1400 Series Wheel Chock. Zinc Plated. 11.88" x 10.5" x 2.13"	2.5 lb. (1.1 kg)
UC14HM	Horizontal Underbody Mounting Bracket* for 1400 Series Wheel Chock. Zinc Plated. 11.75" x 10.25" x 4.75"	2.75 lb. (1.2 kg)

GENERAL PURPOSE - UC 1600 SERIES



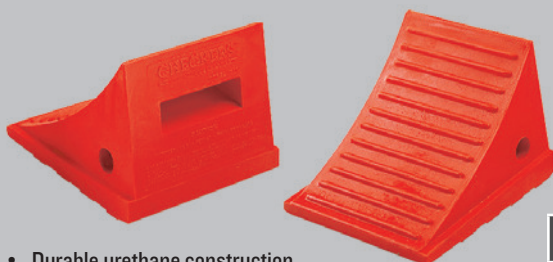
- Durable urethane construction
- Oil and chemical resistant
- Recessed carrying handle
- Mounting hole for ropes or chains
- High visibility orange color
- Available in singles or pairs



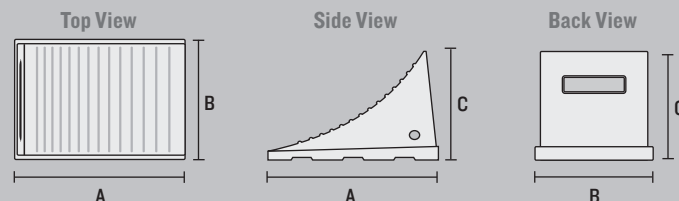
MODEL	A: LENGTH	B: WIDTH	C: HEIGHT	WEIGHT	COLOR
UC1600	11.25 in. (28.6 cm)	8 in. (20.3 cm)	8.25 in. (21.0 cm)	3.5 lb. (1.6 kg)	Orange
UC1600-P (PAIR OF CHOCKS*)	11.25 in. (28.6 cm)	8 in. (20.3 cm)	8.25 in. (21.0 cm)	7.5 lb. (3.4 kg) (PAIR OF CHOCKS)	Orange

UC1600 is certified for tire diameter 27" to 35" (68.6 cm to 88.9 cm) and gross vehicle operating weight up to 40,000 lb. (18,144 kg). Pairs attached with a 48" long piece of 5/8" Polyester rope.

GENERAL PURPOSE - UC 1700 SERIES



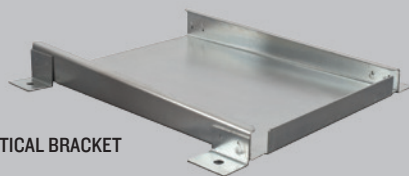
- Durable urethane construction
- Oil and chemical resistant
- Recessed carrying handle
- Mounting hole for ropes or chains
- Mounting brackets available
- High visibility orange color
- Available in singles or pairs



MODEL	A: LENGTH	B: WIDTH	C: HEIGHT	WEIGHT	COLOR
UC1700	8.5 in. (21.6 cm)	7.5 in. (19.1 cm)	6.25 in. (15.9 cm)	2.0 lb. (.91 kg)	Orange
UC1700-P (PAIR OF CHOCKS*)	8.5 in. (21.6 cm)	7.5 in. (19.1 cm)	6.25 in. (15.9 cm)	4.5 lb. (2 kg) (PAIR OF CHOCKS)	Orange

UC1700 is certified for tire diameter 27" to 35" (68.6 cm to 88.9 cm) and gross vehicle operating weight up to 30,000 lb. or 13,608 kg. Pairs attached with a 48" long piece of 5/8" Polyester rope.

MOUNTING BRACKET FOR UC 1700 SERIES *(Mounting Hardware NOT Included)



VERTICAL BRACKET

VERTICAL BRACKET



MODEL	DESCRIPTION	WEIGHT
UC17VM	Vertical Mounting Bracket* for 1700 Series Wheel Chock. Zinc Plated. 10.5" x 9.25" x 1.5"	1.75 lb. (.8 kg)



Monster Chock model number UC1500-6 on mine support vehicle.



Monster MC Chocks used at NASA to hold the Atlas V launch vehicle. (Photo by NASA)